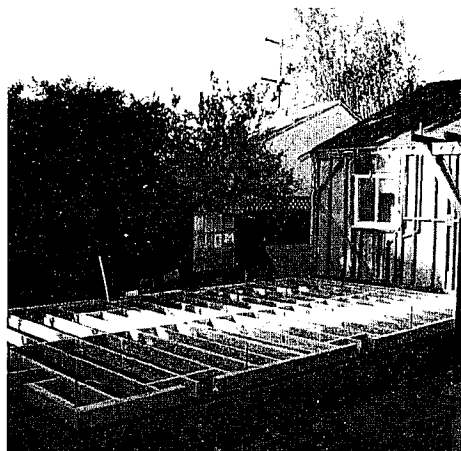


CUESTA CONNECTIONS

The Cuesta Park Neighborhood Association Newsletter

Spring 2008



ANNEX FLOOD PLAN

by Paul Donahue

Should the Cuesta Park Annex be the site for a flood detention basin? That is the question that's being asked by the Santa Clara Valley Water District and the Mountain View City Council.

In 2000, voters approved measure B for clean, safe creeks and natural flood protection. One of the measure's goals is to provide 100-year flood protection for 1667 parcels in Mountain View north of El Camino

Continued on page 2

HOME REMODELING TOUR

Thinking about making more space for your growing family, or just updating your home with more modern conveniences? If so, think about joining us for the Cuesta Park Neighborhood Association home remodeling tour.

Many people in the neighborhood have recently remodeled their homes and are generously inviting neighbors to see the improvements. The updates range from simple kitchen remodels to family room and office additions. Homeowners are also happy to share contractor and supply information as well as their advice.

If you are a resident or home owner in the neighborhood, you are invited to sign up for the tour. The free tour will take place on Sunday, April 13th from 1pm to 4pm, and will be limited in size in order to accommodate individual questions and preserve the owners' new floors.

Contact your neighbor Russ Jones at 961-9682 before April 10th to sign up. While we already have several homes to show this year, we would be interested in knowing if you would like to show your home in future tours.

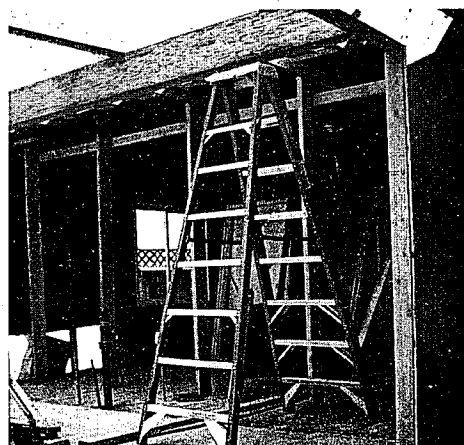
GOING SOLAR

by Chris Dateo

Mary and I had been thinking about solar panels even before Al Gore's *An Inconvenient Truth*. Frequent attendees at Home and Garden Shows, we had stopped and chatted with various vendors and gathered pamphlets and links to websites. Primarily motivated by environmental issues and reducing our carbon footprint, the monetary cost was still a barrier, especially since we had been busy with a sizeable remodel.

In February 2006 we showed up along with several hundred other Mountain View residents to see SolarCity give a presentation. It did seem to be a good time to go solar.

Continued on page 10



WHAT'S INSIDE

CPNA Founder's Award	page 4
Birdwatching	page 5
Sharing More Than Fences	page 8
CERT Mobilized	page 9
Neighborhood Garden Tour	page 11

Annex Flood Plan (Continued)

Real. The SCVWD has investigated dozens of options to fulfill this mandate from the voters. The preferred options would meet the minimum requirement and would also provide flood protection for hundreds of homes in the Cuesta Park neighborhood. All options involve combinations of flood detention facilities at the Cuesta Park Annex, McKelvey Park, Blach School in Los Altos, Rancho San Antonio, and a dam at Hansen Quarry near Cupertino.

On February 2, Save Open Space Mountain View held an information meeting to present the SCVWD's idea of what a flood detention basin in the Cuesta Park Annex would look like. Dozens of neighbors came to hear the presentation by SOS spokesperson Kevin McBride and a SCVWD representative.

Many neighbors have a very negative first reaction when hearing about digging a large hole in Cuesta Park or in the annex. SOS decided to engage RHAA, the firm that initially designed Cuesta Park and that drew up the conceptual plans during the annex's master planning process a few years ago.

The water district paid for an initial conceptual design of the flood basin.

The result, according to most neighbors at the SOS meeting, is very palatable. The gently sloping hills in the proposal were specifically designed with playing children in mind and they preserve the present feel of the annex. The result, according to McBride, is a natural open space in keeping with the city's approved master plan and that meets the flood detention needs of the water district. The development would be paid for by the water district and, unlike the current situation, the city would not be able to change its mind later and vary from the approved master plan.

At a study session on February 26, the City Council heard that the water district's preferred plan (option Z) involves building detention basins at McKelvey Park and in the front part of the Cuesta Park Annex. Rancho San Antonio and Blach School would also be used as detention basins further upstream. Each year there would be a 1% chance that these basins would flood for several days. The rest of the time, they would be available for their normal uses.



Conceptual drawing of the Flood Basin

Several members of the Council expressed concern with flooding McKelvey and some also seemed to be opposed to the annex basin. Members of the public who spoke about option Z varied from cautiously optimistic to fully supportive. Bob Weaver of the Mountain View Historical Association said that the proposed design was "well thought-out and a creative solution."

The SCVWD is now preparing an engineer's report and an environmental impact report. Drafts of the two reports should be available in May, with finalized versions done by October. Construction is expected to begin in 2010 and all measure B projects must be completed by 2016.

CUESTA PARK SPECIALISTS

The ADAMSTM REAL ESTATE GROUP

The Adams Group Sold These Homes in Your Neighborhood

573 Leona Lane	645 Cornelia Court*	297 Barbara Avenue	1476 Bonita Avenue
1611 Nilda Avenue*	613 Lola Lane	1494 Bonita Avenue*	1423 Nilda Avenue
1092 Bonita Avenue*	545 Bonita Court*	1065 Bonita Avenue*	541 Leona Lane
1418 Gretel Lane	1711 Begen Avenue	1091 Nilda Avenue*	◆ - Represented Buyer
555 Bonita Court*	1712 Begen Avenue	1309 Nilda Avenue	● - Co-listed with Royce Cablayan

And We Can Do the Same for YOU!

Call Us For: Remodeling Consultations
Full Staging Services
Contractor Referrals & Coordination
Internet-Driven Marketing



TOP 1% AGENTS WORLDWIDE

TIM PROSCHOLD MICHAEL ADAMS



www.CuestaPark.com

Cell: 650.200.5943
Tim@Adams321.com

Cell: 650.248.8095
Michael@Adams321.com

HOW TO USE A SMALL PLANE TO GET FROM SANTA CLARA TO MOUNTAIN VIEW

by Bob Moragues

I am one of a dozen private pilots living here in Cuesta Park and here is one of my flying stories.

Many people may not know that it was possible to use a small airplane to get from Santa Clara to Mountain View's Cuesta Park Neighborhood.

STEP 1: The blind date

Karin and I first met on a blind date. We were set up by a mutual friend.

STEP 2: The Invitation

I emailed her, "I am looking forward to the next time we can spend some time together. Maybe a sunset air-tour of the bay would be in order. (That is if you are OK in small airplanes)."



STEP 3: The Details

Sunset was at 7:30pm. I am perfectly comfortable flying this route at night, but most people like to see the peninsula during the day. It allows them to see their house/work/etc.

My favorite little flying route goes like this:

- Leave San Jose around 7:00pm
- Fly up the peninsula towards San Francisco
- Take in the sights of the bridges, Trans-America Building, Alcatraz, and other sights from a unique airborne perspective
- Be in the vicinity of the Golden Gate at Sunset (It is amazing.)
- Head down the coast for seafood at Half Moon Bay (Actually Princeton by the Sea)
- Walk on the beach after dinner
- Make the short hop over the hill through Woodside, Palo Alto, Mountain View, and San Jose

The dinner portion of this flight is sometimes subject to the fog at Half Moon Bay. Depending upon what the weather briefer

says, and what we see in the air, possible dinner modifications to the flight include:

- American Food and Pasta at Santa Rosa
- Jonsey's at Napa
- Cattleman's at Livermore
- Mexican at Watsonville
- Seafood at Monterey

STEP 4: The Flight

According to my logbook, we made the flight described above on September 8, 2001

Karin and I had a wonderful sunset flight over the bay. Half Moon Bay was fogged in that night, so we ended up landing in Santa Rosa and enjoyed a nice dinner together before heading back to San Jose.

STEP 5: The Rest of the Story

Karin and I bought a house on Nilda Ave in May 2003 and were married in September of the same year. Our Son, Anthony, was born on October 4, 2007 and took his first airplane ride on February 10, 2008.

STEP 6: Post Log

Over the years, Karin and I have used the small plane, a Beechcraft Bonanza, for many missions. These include flights to visit her parents in Orange County (2 hours flying each way), skiing in Lake Tahoe (1 hour each way), Theater in Columbia (30 minutes each way) and vacation in Friday Harbor, WA (4 hours each way) to name a few trips.

The small plane allows us to travel on our schedule and avoid lengthy drives on the other end. We land 5 minutes from her parents instead of 45 minutes across the LA basin. Flying into Friday Harbor, we were able to land two blocks from our Bed and Breakfast and avoided a two hour drive from Seattle followed by a two hour ferry ride.

Most pilots love to share their love of flying. If you are interested, just ask. Many are open to company when they go up. Don't be shy, ask for a ride...

CPNA FOUNDER'S AWARD

by Mary Dateo, CPNA Secretary

Page McDonald

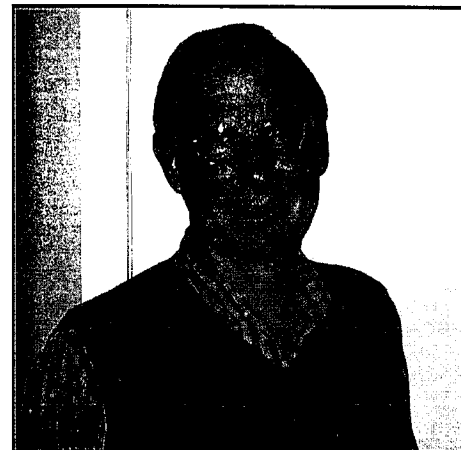
Page McDonald is an extraordinary neighbor and contributor to the overall welfare of the Cuesta Park neighborhood. While she has had many contributions prior to 2007, such as being on the CPNA Garden Tour and being Bubb School PTA president, a significant project has come to fruition in 2007 due to her vision and effort - the Bubb School Garden. Children in our neighborhood are now able to plant seeds, monitor plant growth and enjoy blooming flowers in their own class garden plot. Each stage of the project, from initial design, to gaining approval, rounding up volunteers and planning out the electrical, irrigation, construction and maintenance was helped along by Page's enthusiasm and her team of generous volunteers. (Including David Franklin, Rick VanMell, Greg de la Ossa and George Jacob.)



Page McDonald

Rick VanMell

A two time nominee, Rick VanMell has once again made significant contributions to our neighborhood climate. This year he helped plan and lead the building team for the Bubb School Garden project along with Page McDonald. In addition, he has continued to contribute to the neighborhood CERT team by planning events, and he was the incident commander via email during the rainstorms this winter which lead to recognition by the City for outstanding contributions from a neighborhood. There is also his longtime support for the Mother's and Dog's Society potlucks and the haunted house on Lola Lane. Most neighbors will tell you that they know him best from his walks with his dog Teak and his willingness to help out at the drop of a hat.



Rick VanMell

Margaret Atherton

Margaret Atherton has been a contributor to the Cuesta Park Neighborhood for decades. She was a teacher at Bubb School from 1967 until 1981 and then in the fall of 1981, she started at Graham and taught there 22 years. She continues to be a substitute teacher at Graham even though she is retired. In fact, many moms and dads in the neighborhood remember having her as their teacher! Not one to slow down, she currently coordinates the distribution of the CPNA newsletter, and has helped keep neighbors informed of CPNA events by being a member of the "sign team." Each summer she can be found volunteering at the CPNA summer picnic. In addition to all that, she is a steadfast member of the neighborhood Bunco group and can be seen driving her convertible through the neighborhood.



Margaret Atherton

Sandy VanMell

Dust does not gather in the home of Sandy Van Mell. She and her husband, Rick, are too busy making things happen. Sandy has lived in the neighborhood for 20 years and has been participating in potlucks at Bubb park for the Mothers and Dogs group for almost as long. Some know her for her beautiful handmade jewelry that has been a highlight of the Artists' Open Studio events in the neighborhood for the past two years. She is also a CPNA CERT Block Volunteer.



Sandy VanMell

The CPNA CERT team was also nominated for the Nancy Smith Founder's Award. As the award was created to recognize individuals, the CERT team is not eligible. However, many neighbors have expressed their appreciation for their efforts, including...

"I wanted to let you know that we followed with great interest and relief your reports on the neighborhood status during the big storms while we were gone. It was wonderful to be able to get direct information on the Cuesta Park Neighborhood and hear that our friends and neighbors as well as our home, were all safe. Thank you very much for your efforts and I strongly recommend continuing to use the email distribution list to report status during these emergencies." Dr. Baer, Cuesta Park Neighbor



Volunteers and City employees plant trees



Todd Fernandez and arborist Ray Morneau put down roots in Cuesta Park



Birds bathing in Kathryn's yard

TREE PLANTINGS

by Paul Donahue

On November 10, many of our neighbors and volunteers from around the city helped plant ten trees in Cuesta Park. The event was sponsored by Mountain View Trees, an organization whose mission is to sustain and enhance the trees of Mountain View through community stewardship, education and advocacy.

As a participant, I learned a few things about planting trees, I got a little bit of exercise, and I helped provide a little more green in our increasingly urbanized environment. But most importantly, I now have the ability to take my kids to the park, point at a tree and brag that I planted it!

Since the November event at Cuesta, Mountain View Trees has held tree planting events at the Whisman Sports Center and on the Stevens Creek Trail. For more information on Mountain View Trees and upcoming events, visit <http://www.mountainviewtrees.org>

COME BIRDWATCHING AT CUESTA ANNEX

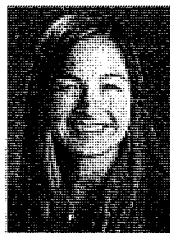
Come meet some fine feathered friends in the Cuesta Annex on Saturday, May 10th at 8:30am.

Bird enthusiast and neighbor Kathryn Carpenter will be on hand with a few reference books to share. We'll meet at the parking lot next to the annex with coffee and refreshments. Bring binoculars if you have them. All ages welcome.

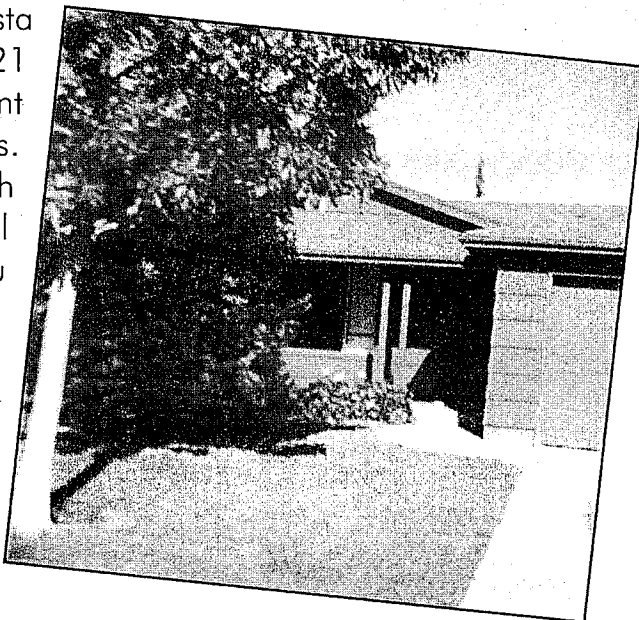
BORN AND RAISED ON ALISON AVE

I was born and raised in the heart of the Cuesta Park neighborhood. Our first home was 1521 Alison, then 1537, pictured circa 1970. I went to Bubba, Graham, MVHS, then UC Davis. I've worked at Cisco and other local high-tech companies. Now that I'm successful in real estate, who's better suited to help you when it's time to buy or sell?

AMBA JANE DESJARDINS



amba@ambajane.com
www.ambajane.com
650.964.1004





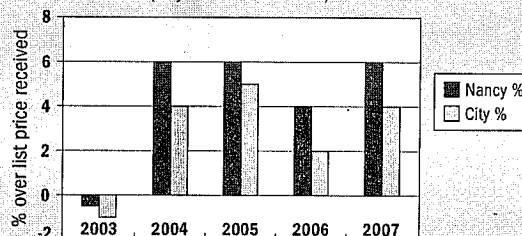
*Thanks to everyone for making the 2007 CPNA picnic great!
This year's picnic will be Saturday, Sept 13th*





SUCCESSFULLY SERVING
CUESTA PARK
FOR OVER A DECADE

Average Percentage Over Asking Price
(City of Mountain View)



NANCY ADELE STUHR

DEPEND ON EXPERIENCE _ EXPERIENCE DEPENDABILITY



tel: 650.917.4361

email: nstuhr@cbnorcal.com web: www.nancystuhr.com



SHARING MORE THAN FENCES

By Sue Fliess

Perhaps if the neighbor in Robert Frost's poem *Mending Wall* had lived in Cuesta Park, he would not have minded the apple tree touching his pine. Or in the case of California, the orange tree touching his Redwood. While we all have fences around our little plots of land, they are low and unassuming and some might even venture to say, unnecessary.

It was a little cream-colored house with blue trim and old, tenuous fences on Drucilla Drive that caught our eye. The odds seemed to be stacked against us to get it. Our hopes were dashed as we were outbid by someone with a huge cash down-payment. But while we were drawing up the papers on a lovely Sunnyvale home, that buyer backed out and the house was ours - if we wanted it. As the woman, I'd already become emotionally attached to it, so, yes, we wanted it. But, just a week shy of closing, I was laid off, and my husband, who had been trying to start his own company, had only an offer letter from his new employer to show the bank. Call it good fortune; call it fuzzy math. We got the house.

We couldn't be happier on our quiet, gingko tree-lined street that attracts nature photographers in the fall wishing to capture the golden show. What could beat a location just a few minutes' walk from the gym, the grocery store, the post office, the bank, the coffee house, the hospital, the farmers' market, the fire station, the elementary school, church (for some), two parks, twelve tennis courts and a grassy annex home to a pair of herons, salamanders, voles and more?

But there was more to the Cuesta Park neighborhood than its convenient location that drew us in. We soon discovered, of course, that it was the people. Upon arriving on Drucilla, the street had but one toddler and several older kids. But soon, the babies came. Today, there are twelve children on our street. Eleven of whom are five years old or younger (two are mine). And another bambino is on the way (not mine!). There is nothing quite like going through the same stages of child-rearing to bring parents together. Our bond went beyond enjoying and commiserating about our children. Empty-nesters, couples who've chosen not to change diapers, and parents knee-



Drucilla Drive neighbors gather for one of their many gatherings.

deep in runny noses and sandy shoes alike, have found common ground and built lasting friendships. We all watch each others' houses, backs, and many times, children. I'm not sure how best to explain this great neighbor phenomenon, because I can't quite put my finger on just one thing...

Maybe it's the summer happy hours that rotate between four to six families every Friday (we've been known to start as early as May and go as late as October!). Or perhaps it's the Oktoberfest parties we host at Cuesta Park, with all that beer and bratwurst and merry-making. It could be Operation Spooky, our Halloween planning committee which turns Drucilla Drive into Dracula Drive one scary night of the year. Or maybe it's the holiday progressive parties that end with all the kids staying up past their bed-times to watch Rudolph while the parents engage in lively conversation over stuffed mushroom caps and apple-tinis. It could be as simple as the impromptu playdates on our street or at our little gem, Bubb Park. It's really hard to say. But whatever it is that makes the neighbors on Drucilla Drive come together, it's something good.

All I know is that on Drucilla Drive, we share so much more than fences.

"A big CONGRATULATIONS and THANK YOU to everyone who participated in the drill ... I can't begin to thank each of you for all of your hard work in planning this big event and bringing your communities together to participate. Please pass along our thanks to the members of your neighborhood."

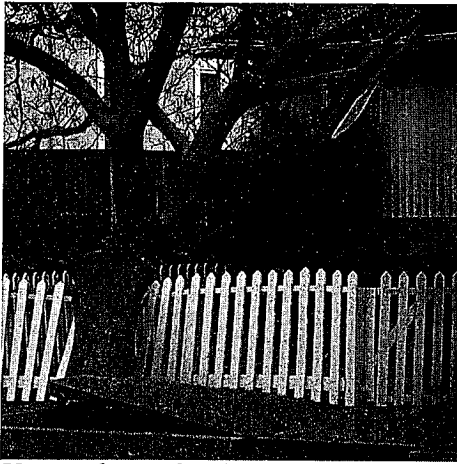
- Jaime Garrett of the Mountain View Fire Department to the CPNA CERT team after the city-wide Emergency Preparedness drill

This space kept clean by

merry maids®

Let us keep your space clean!
(650) 961-8288

www.merrymaids.com
Serving Mountain View since 1985



Uprooted tree after the Jan. 4th storm



CERT team prepares for triage practice



Eric Lipanovich mans the radio to the City



Rick VanMell records the drill incidents

CERT MOBILIZED FOR STORM

by Rick VanMell

It's all in the name: CERT. That's "Community Emergency Response Team." (or is that Cuesta Emergency Response Team?) And respond is just what your CERT did on January 4th.

Mother Nature flexed her muscles, hurling a major storm across the Bay Area and northern California. Trees went down, streets got flooded, and power was lost for three quarters of a million homes. Our neighborhood was among the lucky areas that didn't lose power, but there were a few trouble spots, which your CERT found and either fixed or reported to the city.

After three years of practice drills, here was an opportunity to mobilize your CERT for the real deal. Although many neighbors were still out of town, we had 28 Block Volunteers who responded, of which 20 were available to survey the neighborhood. If you were here, you know how wild, wet, and windy it was, and yet these Volunteers walked or drove the neighborhood and reported back over nine long hours.

The CERT participants got a letter of thanks from the Mayor. What a fine place to live! So the next time you see CERT Block Volunteers, give them a smile and thanks. And if you're so inclined, join CERT yourself, there are lots of way you can contribute.

THE FOLLOWING IS ONLY A TEST...

by Eric Lipanovich

Neighbors-helping-neighbors, that's what CERT is all about. CPNA-CERT (Community Emergency Response Team) is a group of over 60 people in the Cuesta Park neighborhood who volunteer their time and talents to make sure our neighborhood is better prepared for when a disaster strikes.

On Sunday, March 16th, they conducted the first ever Mountain View city-wide CERT exercise to test the communications between all four organized CERTs in Mountain View, Mountain View Fire Department, El Camino Hospital, Palo Alto Red Cross (the Palo Alto chapter serves Mountain View also), local amateur radio operators, and even the radio station at St. Francis High School.

Damage descriptions here placed around the neighborhood, and thirty of our local CERT members surveyed their blocks looking for "damage." They called in their incidents on their CERT provided radios to the EOC (Emergency Operations Center), which is housed in the CERT trailer at Bubb School. In addition to the 30 CERT volunteers, Page McDonald and her Girl Scout troop supplied "victims" to simulate a disaster scene. Two teams were formed to search, rescue, and treat the victims at the scene. (I'm pleased to announce that all the 'victims' are now doing extremely well, even the ones pronounced DOA at the time!)

The status of El Camino Hospital was relayed to the city, then out to the CERTs, via amateur radio. The Red Cross, via amateur radio operators at our Fire Stations, directed spontaneous volunteers to help operations at emergency centers. KSFH (FM 87.9) broadcast an emergency message giving residents of Mountain View the official word on what was happening in our city.

This exercise was the first time all these disparate groups had worked together to be ready to handle the aftermath of a disaster. We all learned a great deal. And although there were a couple rough spots, the drill was a tremendous success. The goal was to test our communications, and the messages did get through.

For more information and photos from the drill visit:
<http://www.islander36.org/cert3-16-08/cert3-16-08.html>

Solar Panels (Continued)

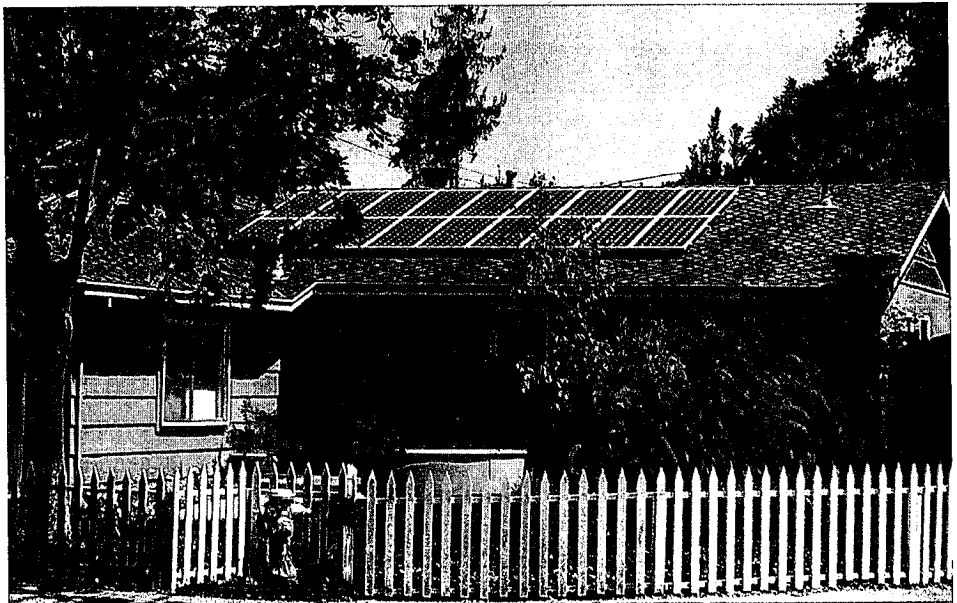
Electricity rates have averaged a 6 % increase yearly over the past 30 years. With the Federal tax credit future uncertain, and State Solar Initiative rebates being reduced, and a shortage of silicon for solar panels due to increase demand, it seemed like a good deal and the timing was right.

We signed up to have SolarCity come out to our house and shortly after, we signed a contract. We wanted to produce enough solar energy to offset our electric energy usage, not just zero out our bill. This resulted in a quote for a 2.5 kW system composed of 14 solar panels for a cost of about \$13-14K after federal rebate, state incentives, and discounts if Mountain View hit the 175 kW goal. In the end, we opted for a larger 4.0 kW system with 27 panels costing over \$21K after federal rebate, state incentives, and discounts if Mountain View hit the 175 kW goal, thinking eventually we might get an electric car or convert some things from gas to electric.

Installation took about 5 days and the city inspection occurred two days later. PG&E came and installed our new digital meter and gave its final blessing just 75 days after the community meeting. We were up and running and watching the meter spin backwards!

It was pretty exciting over the initial months, checking every day what our production was ... 24-26 kWh/day! By mid-October, we had almost 6 months of consistently producing more than we used, had banked a credit of over \$375, and had produced a net of 750 kWh of electricity. In November, as the days got shorter and the angle of the sun less favorable, we started using more than we produced, the daily production falling to 6-8 kWh/day when the sun shined, and less on cloudy and rainy days. As of January, we still have a credit of \$290 and we fully expect a \$0 PG&E bill when our True-up period ends in April.

Our current output is 1 kW with a total lifetime output of 4,054 kWh of energy generated. This corresponds to a reduction of 2,111.46 lbs of carbon dioxide, equivalent to the pollution an average passenger car emits over 88 days. It gives additional information that sounds even more impressive, the lifetime energy produced is



Chris and Mary's solar panels can be seen on their home on Montalto.

enough to power 162 houses for one day, operate a TV for 16,216 hours, or play an iPod for 4,054 years!

Part of SolarCity's service includes web-based monitoring of the system, which enables them to keep track of the system's performance and know if maintenance is needed. In fact, if you want to see how our system and those of others from SolarCity are doing, you can check them out at <http://solarguard.solarcity.com/kiosk/>.

Overall, we were very satisfied with all aspects of the project. From my perspective, the system looks cool, there is essentially little maintenance (ok, I get Mary to go up on the roof and hose them down every couple of months). The actual solar panels have a warranty of 25 years and life expectancy of much more than that. The inverter has a warranty of 10 years and we were told possibly a 15 year life span. In the end about 120 MV households installed over 360 kW, essentially double the goal.

Though the co-op buying program has ended, if you are interested in learning more about SolarCity, check out their website at <http://solarcity.com/>. For general information about solar and other alternative sources of energy, some useful links are <http://www.energy.ca.gov/> and <http://www.gosolarcalifornia.ca.gov/>. FastCompany magazine used our house in a photo shoot for an article on new green companies.

(www.fastcompany.com/magazine/116/next-innovation.html).

Of course, you are welcome to come by, and Mary and I would be happy to show you our system and talk your ears off, as I have left out so much from this article.

Kindermusik

Imagine **whirling, creating, storytelling, and singing.**
Nowhere else is learning this much fun.

- The world's most respected name in music and movement for children newborn to 7 yrs old
- Exclusive At Home materials give you even more Kindermusik moments all week long

Wendy Nelson
650-968-4733
wendymusikmom@aol.com
www.kindermusik.com

NEIGHBOR SPOTLIGHT

Linda Turek lives on Nilda Ave. and has been a high tech recruiter for 23 years. She currently works at SiliconValleySearch.com and is an active participant of the Bagels and Babies group in Cuesta Park with her daughter Emma. On sunny days she can be seen walking her two dogs around the neighborhood.

IMPROVING YOUR IMAGE

by Linda Turek

I would like to pass along some concrete examples of things you can do to improve your image in the work place. Following a poll I conducted in 2001, I started keeping track of the changing conventions in business etiquette, specifically with regard to gadgets, cell phones, etc.

Much of your professional image today is derived from your emails, text messages, and cell phone usage, and there are some pet peeves that executives and middle management consider deal breakers.

Email:

1. When you are responding to an email, reply with original text, and place your responses in the appropriate context.
2. Answer questions from emails in your return subject line when possible
3. Avoid sabotage: being aggressive or catty with the cc, bcc or 'reply to all' functions, hoping to draw another's failings to management's attention is just not cool.
4. Avoid forwarding all "save the world," "sign this petition," "send this on to 10 people you love and prosperity will be yours" messages .

Mostly, with regard to all e-communication: there is no substitute for face-to-face conversation, where people can share facial expressions and other crucial ways of communicating. Get some face time every once in a while, even if it's three minutes in the hall. Failing that, at least get on a landline every once in a while to make a stronger impression.

Blackberries, Laptops and Texting in Meetings: Simply, put them away during meetings.

Cell phones:

1. Some people are constantly answering cell phones in meetings, while in another conversation, even during interviews! To answer your cell while in a meeting or conference is just as rude as walking out of the room.
2. Choose your ring wisely. Weird, attention-getting rings that distract all listeners and make them wonder about your taste and maturity.
3. If it is not urgent, communicate another way. Then, when it truly is urgent, they are more likely to take you seriously. And answer you.

Voicemail recommendations:

1. Make it shorter, shorter, shorter! The #1 complaint is rambling.
2. Repeat your return number twice and a good time to reach you.

You can stand out from the crowd in tough times by simply being dependable, punctual, and easy going; especially if your peers are impolite, brash prima donnas.



NEIGHBORHOOD GARDEN TOUR ON APRIL 19

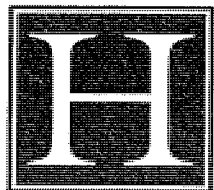
Take a walk on a nice spring day and get to know your neighbors as you discover wonderful gardens close to your own backyard. The 3rd annual Neighborhood Garden Tour takes place Saturday, April 19, from 9 a.m. to noon.

This is a self-guided tour and you are welcome to visit the gardens on the tour any time between 9 a.m. and noon. To start the tour, come to the Bubb School Garden where you will sign in and pick up a tour map. The Bubb Garden is adjacent to the Bubb parking lot on the Barbara Avenue side of the school. It is a fenced garden that is visible from the street and will be marked with balloons for the tour.

After the tour, everyone is invited to a potluck lunch at 12:30 p.m. We will meet at the picnic tables to the left of the parking area next to the Bubb School Garden. Please bring some food to share; drinks and plates/utensils will be provided.

Whether you avidly garden or just want to see what your neighbors are doing with their yards, the tour is a fun way to share ideas and meet people in the neighborhood. If you have any questions or would like to add your garden to the tour, please contact Kara Stone at kkaug3@yahoo.com. Gardens of all sizes and styles are welcome on the tour.

If you would like to connect with other gardeners in the neighborhood, there is a YahooGroup called CP Gardeners. To join, please send an email to cpgardeners-subscribe@yahoogroups.com



HANSON
CONSTRUCTION

design & build services

License #517691 (408) 517-0300

www.hanson-construction.us

NEIGHBORHOOD HOLIDAY FAIRE

On Saturday, Dec 1, Cuesta Park Artists, Girl and Cub Scout Troops gathered at St. Tim's with neighbors to create holiday memories & celebrate the season!

In addition to handcrafted art by our Cuesta Park artisans, this year's merry event included creative activities to commemorate the holiday season--from photography by our Girl and Cub Scout Troops, to do-it-yourself holiday portraits and masterpiece artwork by our neighborhood kids! Adding to the festive atmosphere was the beautiful holiday music by our neighbor pianist Doretta Stroman, making this event extra special!

With the sponsorship of our former resident, Amba Jane DesJardins (now neighborhood realtor), event producers Wendy Yee and Eric Lipanovich spent a lot of time and effort to create this as a community arts event. "I am happy to say that we achieved what we set out to do...help our neighborhood artists showcase their creativity and help kids learn about the arts—in this case, photography." This Artists Holiday Fair was a memorable event for all!



The Girl Scouts captured this happy moment at the Holiday Faire

WHAT IS CPNA?

The Cuesta Park Neighborhood Association (CPNA) was formed in 2002 to promote a sense of community pride in our neighborhood, to increase emergency preparedness, to sponsor social activities for residents, and to act as a common voice to express our neighbors' wishes and grievances to the City of Mountain View.

CPNA is not a homeowners' association. We do not enforce any covenants that homeowners may have, and we are not exclusively for homeowners. Anyone who lives in the neighborhood is automatically a CPNA member, including a large number of renters, many of whom have lived here for decades. Our neighborhood boundaries are Miramonte Avenue, El Camino Real, Grant Road, and the back side of Cuesta Park/Villa Siena.

Buy this space!

This size ad in the newsletter sells for \$70, or buy a half page ad for \$400. Contact Sarah at 968-3416 for details.

Next Issue: August 2008

CALENDAR OF NEIGHBORHOOD EVENTS

CPNA REMODELING TOUR: Sunday, April 13th, 1:00pm - 4:00pm (See page 1.)

CPNA GARDEN TOUR: Saturday, April 19th 9:00am - 12:00pm (See page 11.)

CPNA MEETING: Thursday, April 24th, 6:30, St. Timothy's, 2094 Grant Road. Dinner will be provided, elections will be held, and the tentative topic is flood detention in the Cuesta Annex.

MOUNTAIN VIEW SPRING PARADE, Saturday, April 26th, 12:00pm

CPNA BIRD WATCHING IN CUESTA ANNEX: Saturday, May 10th, 8:30am (See page 5.)

CITY WIDE GARAGE SALE: May 3rd & 4th, 8:00am-2:00pm

CPNA NEIGHBORHOOD PICNIC: Saturday, September 13th, 12:00pm at Cuesta Park (See the next issue of *Cuesta Connections*.)

CERT RADIO DRILLS: First day of each month from 8:00-8:15pm.

CERT MEETINGS: Second Monday of each month at 7:30pm at St. Timothy's.

CPNA GENERAL MEETINGS: Thursday, July 24th and October 23rd.

WHAT IS "CPNA TALK"?

CPNAtalk is the name of the Yahoo Group for the neighborhood. If you are in the neighborhood and have Internet access you can join a group of over 300 of your neighbors! Here are recent topics:

- Traffic Ticket Advice
- Handyman recommendations
- Missing dog (later found)
- Pest Control

You can sign up at
<http://groups.yahoo.com/group/cpnatalk>

HOW TO GET INVOLVED

The simplest way to get involved is by joining the CPNAtalk list. That contains announcements of neighborhood activities. Attending CPNA's quarterly meetings is a great way to stay more informed.

If you'd like to help with future newsletter distribution, emergency preparedness, social event set up or planning, or in any other way, contact Paul Donahue at 968-3416 or pmd1@cornell.edu.